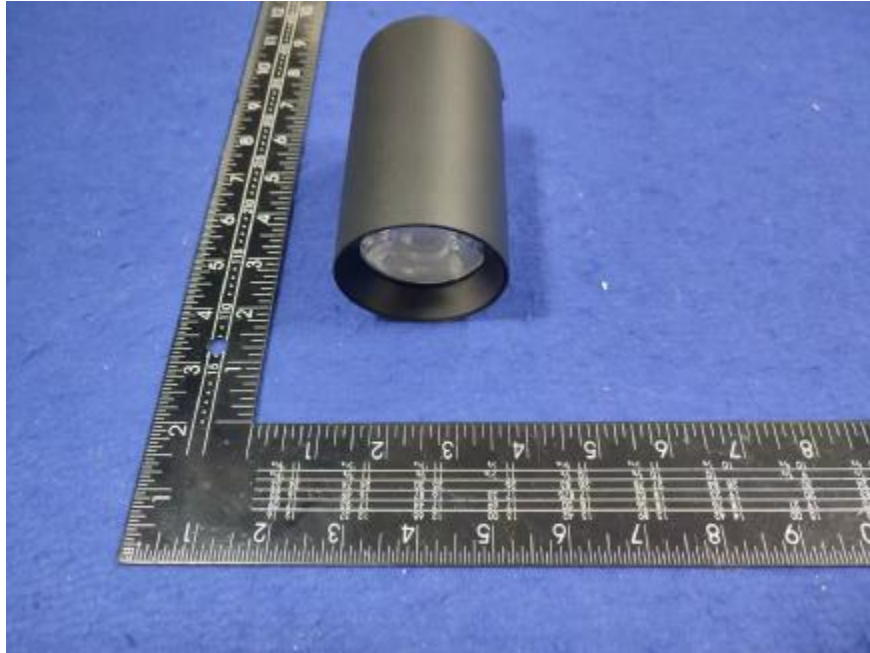


## 燈 具 實 物 照 片



|                     |         |                          |
|---------------------|---------|--------------------------|
| Light Output Ratio: | 87.5%   |                          |
| Luminaire Power:    | 14.83 W |                          |
| SHR Nominal:        | 0.50    | Calculated using the TM5 |
| SHR Maximum:        | 0.60    | fine grid method.        |

C角度范围: 0度 - 360度  
 C角度间隔: 30.0度  
 测试速度: 快速  
 环境温度: 25.3℃  
 测试人员: zoe  
 测试日期: 2025-01-02

Y角度范围: 0度 - 180度  
 Y角度间隔: 1.0度  
 测试系统: 远方(EVERFINE)GO-SPEX500\_V1系统 V2.00.461  
 环境湿度: 65.0%  
 测试距离: 3.160米 [K=1.0000]  
 备注: LAMP:BXRE-30G10TH-A-83 Ra:90  
 LENS:PM-0132B 36R  
 NOT DRIVER:48V  
 30minutes warm-up

## 灯具配光曲线及特征面照片

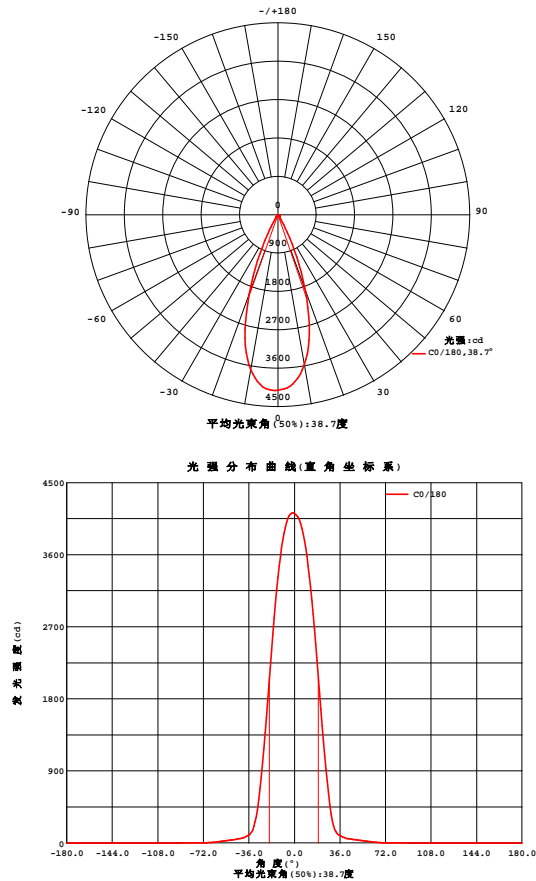


Fig. C0/C180

C角度范围: 0度 - 360度  
C角度间隔: 30.0度  
测试速度: 快速  
环境温度: 25.3℃  
测试人员: zoe  
测试日期: 2025-01-02

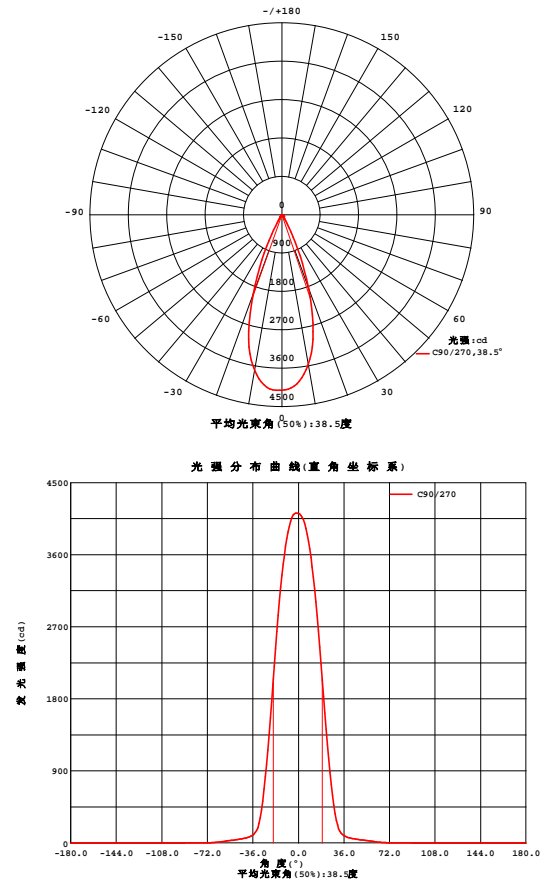


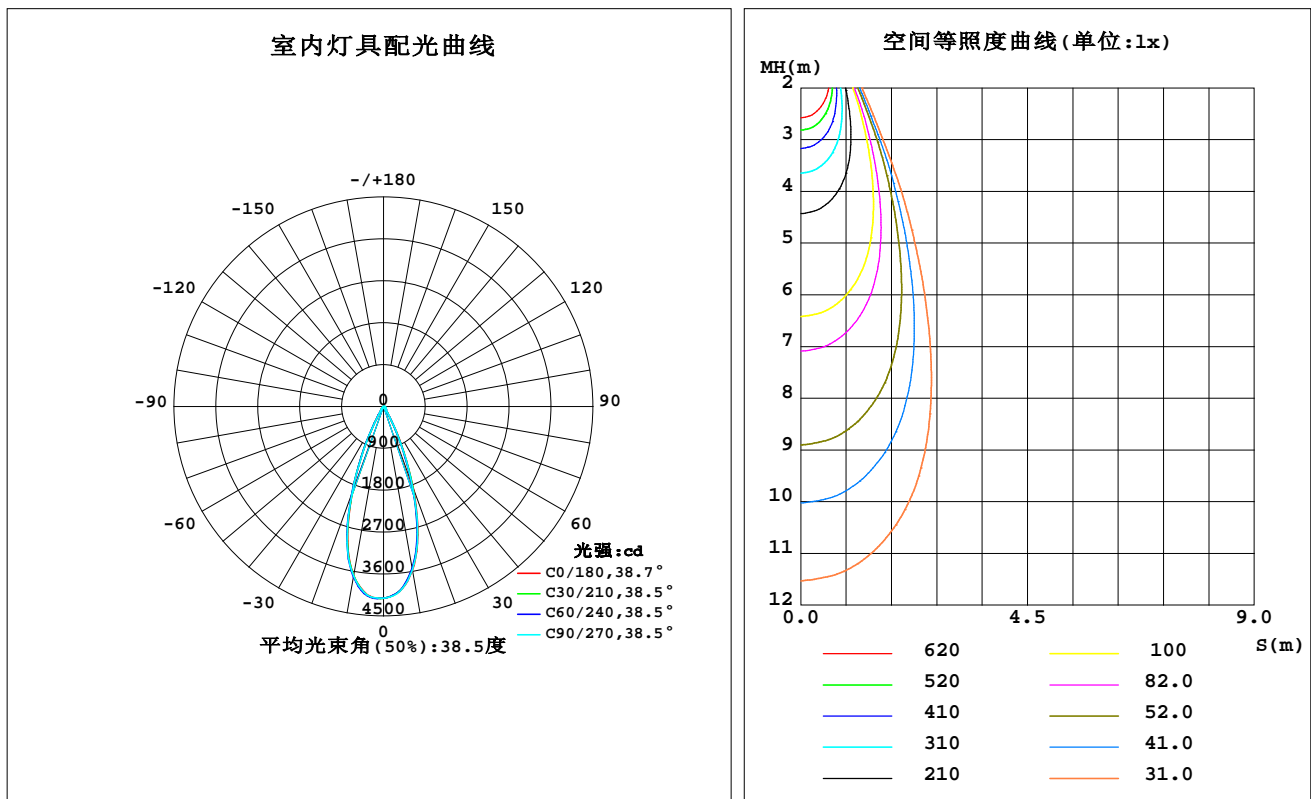
Fig. C90/C270

Y角度范围: 0度 - 180度  
Y角度间隔: 1.0度  
测试系统: 远方(EVERFINE)GO-SPEX500\_V1系统 V2.00.461  
环境湿度: 65.0%  
测试距离: 3.160米 [K=1.0000]  
备注: LAMP:BXRE-30G10TH-A-83 Ra:90  
LENS:PM-0132B 36R  
NOT DRIVER:48V  
30minutes warm-up

## 室内灯具光度数据

|  |                              |                  |
|--|------------------------------|------------------|
| 实测参数: U:47.997V I:0.3090A P:14.831W PF:1.0000 Freq:49.99Hz<br>实检光通: 1994.65x1 lm |                              |                  |
| 灯具名称: OZ48-SA-HE-64  | 灯具类型:                        | 灯具重量:            |
| 灯具规格: 3000K  | 外型尺寸:                        | 测试编号: 2501020007 |
| 制造厂商: RISE   | 发光口面: 0.002826m <sup>2</sup> | 遮光角:             |

| 光源数据      |           | 光度数据     |        |                   |          | 光效: 117.73 lm/W |
|-----------|-----------|----------|--------|-------------------|----------|-----------------|
| 型号        | Brideglux | 峰值光强(cd) | 4125   | S/MH(C0/180)      | 0.61     |                 |
| 标称功率(W)   | 15        | 灯具效率(%)  | 87.5   | S/MH(C90/270)     | 0.61     |                 |
| 额定电源电压(V) | 48        | 总光通量(lm) | 1746.0 | η UP,DN(C0-180)   | 0.0,42.7 |                 |
| 额定光通量(lm) | 1994.65   | CIE分类    | 直接     | η UP,DN(C180-360) | 0.0,44.8 |                 |
| 灯具内光源数(只) | 1         | 上射光通比(%) | 0.0    | CIBSE SHR NOM     | 0.50     |                 |
| 实测电源电压(V) | 48        | 下射光通比(%) | 87.5   | CIBSE SHR MAX     | 0.60     |                 |



C角度范围: 0度 - 360度  
C角度间隔: 30.0度  
测试速度: 快速  
环境温度: 25.3℃  
测试人员: zoe  
测试日期: 2025-01-02

γ角度范围: 0度 - 180度  
γ角度间隔: 1.0度  
测试系统: 远方(EVERFINE)GO-SPEX500\_V1系统 V2.00.461  
环境湿度: 65.0%  
测试距离: 3.160米 [K=1.0000]  
备注: LAMP:BXRE-30G10TH-A-83 Ra:90  
LENS:PM-0132B 36R  
NOT DRIVER:48V  
30minutes warm-up

## 灯具环带光通量

环带光通量:

| $\gamma$ | C0     | C45    | C90    | C135   | C180   | C225   | C270   | C315   | $\gamma(^{\circ})$ | 环      | 总     | %lum, lamp |
|----------|--------|--------|--------|--------|--------|--------|--------|--------|--------------------|--------|-------|------------|
| 10       | 3575   | 3539   | 3565   | 3614   | 3687   | 3707   | 3703   | 3633   | 0- 10              | 371.1  | 371.1 | 21.3, 18.6 |
| 20       | 1869   | 1810   | 1827   | 1880   | 1982   | 1999   | 1988   | 1932   | 10- 20             | 785.6  | 1157  | 66.3, 58   |
| 30       | 275.6  | 271.0  | 280.9  | 283.0  | 320.9  | 307.5  | 311.8  | 284.8  | 20- 30             | 437.3  | 1594  | 91.3, 79.9 |
| 40       | 64.02  | 66.54  | 66.31  | 66.32  | 67.36  | 69.20  | 68.22  | 64.39  | 30- 40             | 79.39  | 1673  | 95.8, 83.9 |
| 50       | 36.55  | 37.86  | 38.03  | 37.33  | 37.30  | 38.08  | 38.19  | 36.66  | 40- 50             | 38.41  | 1712  | 98, 85.8   |
| 60       | 16.17  | 17.17  | 17.69  | 16.16  | 15.48  | 15.61  | 16.03  | 15.86  | 50- 60             | 24.68  | 1737  | 99.5, 87.1 |
| 70       | 3.072  | 3.394  | 3.535  | 3.383  | 2.882  | 3.019  | 3.075  | 3.142  | 60- 70             | 8.570  | 1745  | 99.9, 87.5 |
| 80       | 0.0903 | 0.0744 | 0.0892 | 0.0786 | 0.0842 | 0.0672 | 0.0774 | 0.0607 | 70- 80             | 0.8821 | 1746  | 100, 87.5  |
| 90       | 0      | 0      | 0      | 0      | 0      | 0      | 0      | 0      | 80- 90             | 0.0600 | 1746  | 100, 87.5  |
| 100      | 0      | 0      | 0      | 0      | 0      | 0      | 0      | 0      | 90-100             | 0      | 1746  | 100, 87.5  |
| 110      | 0      | 0      | 0      | 0      | 0      | 0      | 0      | 0      | 100-110            | 0      | 1746  | 100, 87.5  |
| 120      | 0      | 0      | 0      | 0      | 0      | 0      | 0      | 0      | 110-120            | 0      | 1746  | 100, 87.5  |
| 130      | 0      | 0      | 0      | 0      | 0      | 0      | 0      | 0      | 120-130            | 0      | 1746  | 100, 87.5  |
| 140      | 0      | 0      | 0      | 0      | 0      | 0      | 0      | 0      | 130-140            | 0      | 1746  | 100, 87.5  |
| 150      | 0      | 0      | 0      | 0      | 0      | 0      | 0      | 0      | 140-150            | 0      | 1746  | 100, 87.5  |
| 160      | 0      | 0      | 0      | 0      | 0      | 0      | 0      | 0      | 150-160            | 0      | 1746  | 100, 87.5  |
| 170      | 0      | 0      | 0      | 0      | 0      | 0      | 0      | 0      | 160-170            | 0      | 1746  | 100, 87.5  |
| 180      | 0      | 0      | 0      | 0      | 0      | 0      | 0      | 0      | 170-180            | 0      | 1746  | 100, 87.5  |
| 单位: °    | 光强: cd |        |        |        |        |        |        |        |                    | 单位: lm |       |            |

C角度范围: 0度 - 360度  
 C角度间隔: 30.0度  
 测试速度: 快速  
 环境温度: 25.3℃  
 测试人员: zoe  
 测试日期: 2025-01-02

$\gamma$ 角度范围: 0度 - 180度  
 $\gamma$ 角度间隔: 1.0度  
 测试系统: 远方(EVERFINE)GO-SPEX500\_V1 系统 V2.00.461  
 环境湿度: 65.0%  
 测试距离: 3.160米 [K=1.0000]  
 备注: LAMP: BXRE-30G10TH-A-83 Ra: 90  
 LENS: PM-0132B 36R  
 NOT DRIVER: 48V  
 30minutes warm-up

## 灯具亮度限制曲线

实测参数: U:47.997V I:0.3090A P:14.831W PF:1.0000 Freq:49.99Hz  
实检光通: 1994.65x1 lm

灯具名称: OZ48-SA-HE-64

灯具类型:

灯具重量:

灯具规格: 3000K

外型尺寸:

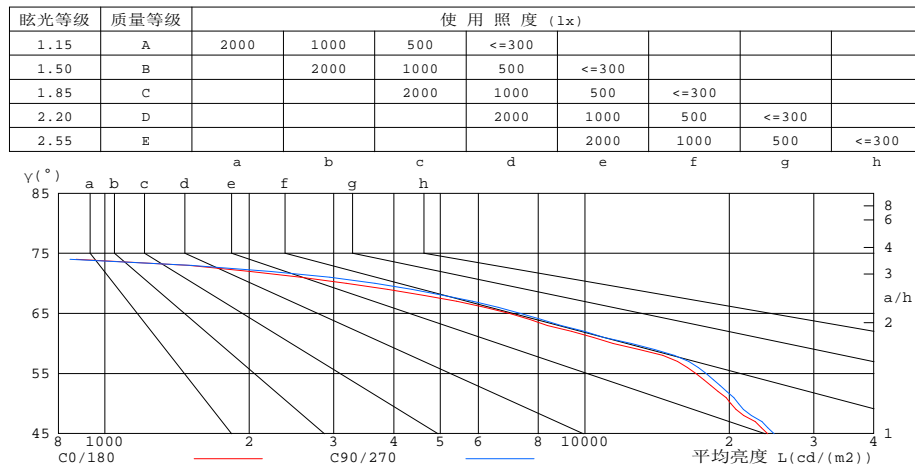
测试编号: 2501020007

制造厂商: RISE

发光口面: 0.002826m<sup>2</sup>

遮光角:

有光侧边灯具的亮度限制曲线



| 平均亮度值 cd/(m2) |        |         |
|---------------|--------|---------|
| γ(°)          | C0/180 | C90/270 |
| 85            | 304    | 275     |
| 80            | 184    | 182     |
| 75            | 393    | 420     |
| 70            | 3182   | 3656    |
| 65            | 6962   | 7341    |
| 60            | 11455  | 12511   |
| 55            | 17038  | 17905   |
| 50            | 20144  | 20922   |
| 45            | 24061  | 24781   |

c角度范围: 0度 - 360度  
c角度间隔: 30.0度  
测试速度: 快速  
环境温度: 25.3℃  
测试人员: zoe  
测试日期: 2025-01-02

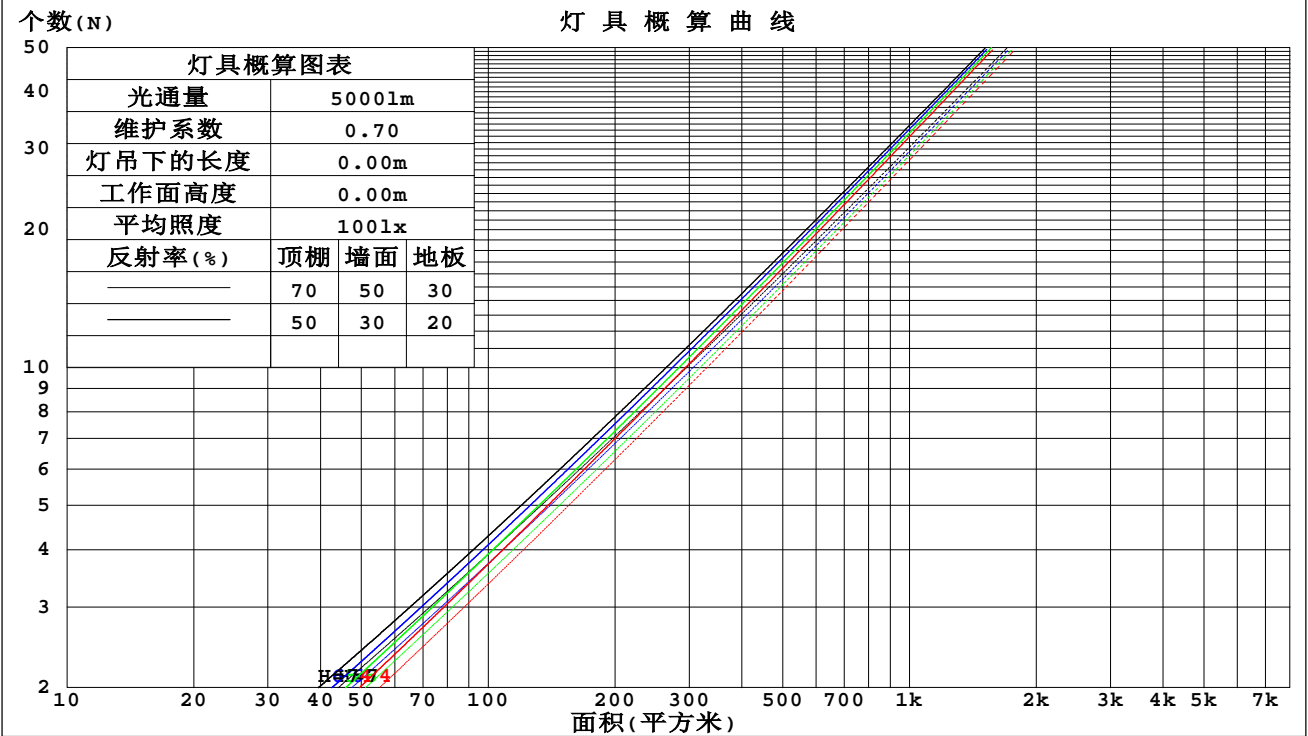
γ角度范围: 0度 - 180度  
γ角度间隔: 1.0度  
测试系统: 远方(EVERFINE)GO-SPEX500\_V1系统 V2.00.461  
环境湿度: 65.0%  
测试距离: 3.160米 [K=1.0000]  
备注: LAMP:BXRE-30G10TH-A-83 Ra:90  
LENS:PM-0132B 36R  
NOT DRIVER:48V  
30minutes warm-up



工作面利用系数和灯具概算曲线

|  |                  |                  |
|--|------------------|------------------|
| 实测参数: U:47.997V I:0.3090A P:14.831W PF:1.0000 Freq:49.99Hz |                  |                  |
| 实检光通: 1994.65x1 lm   |                  |                  |
| 灯具名称: OZ48-SA-HE-64  | 灯具类型:            | 灯具重量:            |
| 灯具规格: 3000K  | 外型尺寸:            | 测试编号: 2501020007 |
| 制造厂商: RISE   | 发光口面: 0.002826m2 | 遮光角:             |

|      |               |      |      |      |      |      |     |     |     |     |     |     |     |     |     |     |
|------|---------------|------|------|------|------|------|-----|-----|-----|-----|-----|-----|-----|-----|-----|-----|
| 顶棚   | 80%           |      |      | 70%  |      |      | 50% |     |     | 30% |     |     | 10% |     |     | 0   |
| 墙面   | 50%           | 30%  | 10%  | 50%  | 30%  | 10%  | 50% | 30% | 10% | 50% | 30% | 10% | 50% | 30% | 10% | 0   |
| 地板   | 20%           |      |      | 20%  |      |      | 20% |     |     | 20% |     |     | 20% |     |     | 0   |
| 室空间比 | 工 作 面 利 用 系 数 |      |      |      |      |      |     |     |     |     |     |     |     |     |     |     |
| 0.0  | 1.04          | 1.04 | 1.04 | 1.02 | 1.02 | 1.02 | .97 | .97 | .97 | .93 | .93 | .93 | .89 | .89 | .89 | .88 |
| 1.0  | .98           | .96  | .95  | .96  | .95  | .93  | .93 | .91 | .90 | .89 | .88 | .88 | .87 | .86 | .85 | .83 |
| 2.0  | .93           | .90  | .87  | .91  | .88  | .86  | .88 | .86 | .84 | .86 | .84 | .83 | .84 | .82 | .81 | .80 |
| 3.0  | .88           | .84  | .81  | .87  | .83  | .81  | .84 | .82 | .79 | .82 | .80 | .78 | .81 | .79 | .77 | .76 |
| 4.0  | .84           | .80  | .77  | .83  | .79  | .76  | .81 | .78 | .75 | .79 | .76 | .74 | .78 | .75 | .74 | .72 |
| 5.0  | .80           | .76  | .72  | .79  | .75  | .72  | .77 | .74 | .72 | .76 | .73 | .71 | .75 | .72 | .70 | .69 |
| 6.0  | .76           | .72  | .69  | .76  | .72  | .69  | .74 | .71 | .68 | .73 | .70 | .68 | .72 | .69 | .67 | .66 |
| 7.0  | .73           | .69  | .66  | .72  | .68  | .66  | .71 | .68 | .65 | .70 | .67 | .65 | .70 | .67 | .65 | .64 |
| 8.0  | .70           | .66  | .63  | .70  | .66  | .63  | .69 | .65 | .63 | .68 | .65 | .62 | .67 | .64 | .62 | .61 |
| 9.0  | .67           | .63  | .60  | .67  | .63  | .60  | .66 | .63 | .60 | .66 | .62 | .60 | .65 | .62 | .60 | .59 |
| 10.0 | .65           | .61  | .58  | .65  | .61  | .58  | .64 | .60 | .58 | .63 | .60 | .58 | .63 | .60 | .58 | .57 |



c角度范围: 0度 - 360度  
c角度间隔: 30.0度  
测试速度: 快速  
环境温度: 25.3℃  
测试人员: zoe  
测试日期: 2025-01-02

γ角度范围: 0度 - 180度  
γ角度间隔: 1.0度  
测试系统: 远方(EVERFINE)GO-SPEX500\_V1系统 V2.00.461  
环境湿度: 65.0%  
测试距离: 3.160米 [K=1.0000]  
备注: LAMP:BXRE-30G10TH-A-83 Ra:90  
LENS:PM-0132B 36R  
NOT DRIVER:48V  
30minutes warm-up

## 墙面和天花板利用系数

|  |                  |                  |
|--|------------------|------------------|
| 实测参数: U:47.997V I:0.3090A P:14.831W PF:1.0000 Freq:49.99Hz<br>实检光通: 1994.65x1 lm |                  |                  |
| 灯具名称: OZ48-SA-HE-64  | 灯具类型:            | 灯具重量:            |
| 灯具规格: 3000K  | 外型尺寸:            | 测试编号: 2501020007 |
| 制造厂商: RISE   | 发光口面: 0.002826m2 | 遮光角:             |

|      |               |      |      |      |      |      |      |      |      |      |      |      |      |      |      |   |
|------|---------------|------|------|------|------|------|------|------|------|------|------|------|------|------|------|---|
| 顶棚   | 80%           |      |      | 70%  |      |      | 50%  |      |      | 30%  |      |      | 10%  |      |      | 0 |
| 墙面   | 50%           | 30%  | 10%  | 50%  | 30%  | 10%  | 50%  | 30%  | 10%  | 50%  | 30%  | 10%  | 50%  | 30%  | 10%  | 0 |
| 地板   | 20%           |      |      | 20%  |      |      | 20%  |      |      | 20%  |      |      | 20%  |      |      | 0 |
| 室空间比 | 墙 壁 面 利 用 系 数 |      |      |      |      |      |      |      |      |      |      |      |      |      |      |   |
| 0.0  |               |      |      |      |      |      |      |      |      |      |      |      |      |      |      |   |
| 1.0  | .134          | .076 | .024 | .128 | .073 | .023 | .117 | .067 | .021 | .107 | .062 | .020 | .098 | .057 | .018 |   |
| 2.0  | .126          | .069 | .021 | .121 | .067 | .021 | .112 | .062 | .019 | .104 | .058 | .018 | .096 | .054 | .017 |   |
| 3.0  | .119          | .063 | .019 | .115 | .061 | .018 | .107 | .058 | .018 | .100 | .055 | .017 | .093 | .052 | .016 |   |
| 4.0  | .112          | .058 | .017 | .109 | .057 | .017 | .102 | .054 | .016 | .096 | .052 | .016 | .090 | .049 | .015 |   |
| 5.0  | .106          | .054 | .016 | .103 | .053 | .015 | .098 | .051 | .015 | .092 | .049 | .014 | .088 | .047 | .014 |   |
| 6.0  | .101          | .051 | .014 | .098 | .050 | .014 | .093 | .048 | .014 | .089 | .046 | .014 | .085 | .045 | .013 |   |
| 7.0  | .096          | .048 | .013 | .094 | .047 | .013 | .090 | .045 | .013 | .086 | .044 | .013 | .082 | .043 | .013 |   |
| 8.0  | .092          | .045 | .013 | .090 | .044 | .013 | .086 | .043 | .012 | .083 | .042 | .012 | .079 | .041 | .012 |   |
| 9.0  | .088          | .043 | .012 | .086 | .042 | .012 | .083 | .041 | .012 | .080 | .040 | .011 | .077 | .039 | .011 |   |
| 10.0 | .084          | .040 | .011 | .083 | .040 | .011 | .080 | .039 | .011 | .077 | .038 | .011 | .074 | .037 | .011 |   |

|      |         |      |      |      |      |      |      |      |      |      |      |      |      |      |      |   |
|------|---------|------|------|------|------|------|------|------|------|------|------|------|------|------|------|---|
| 顶棚   | 80%     |      |      | 70%  |      |      | 50%  |      |      | 30%  |      |      | 10%  |      |      | 0 |
| 墙面   | 50%     | 30%  | 10%  | 50%  | 30%  | 10%  | 50%  | 30%  | 10%  | 50%  | 30%  | 10%  | 50%  | 30%  | 10%  | 0 |
| 地板   | 20%     |      |      | 20%  |      |      | 20%  |      |      | 20%  |      |      | 20%  |      |      | 0 |
| 室空间比 | 天花板利用系数 |      |      |      |      |      |      |      |      |      |      |      |      |      |      |   |
| 0.0  | .167    | .167 | .167 | .143 | .143 | .143 | .097 | .097 | .097 | .056 | .056 | .056 | .018 | .018 | .018 |   |
| 1.0  | .148    | .138 | .128 | .127 | .118 | .111 | .087 | .081 | .076 | .050 | .047 | .044 | .016 | .015 | .014 |   |
| 2.0  | .134    | .116 | .101 | .114 | .100 | .088 | .078 | .069 | .061 | .045 | .040 | .036 | .014 | .013 | .012 |   |
| 3.0  | .121    | .099 | .082 | .104 | .086 | .071 | .071 | .059 | .050 | .041 | .035 | .029 | .013 | .011 | .010 |   |
| 4.0  | .111    | .086 | .067 | .095 | .074 | .058 | .066 | .052 | .041 | .038 | .030 | .024 | .012 | .010 | .008 |   |
| 5.0  | .103    | .076 | .055 | .088 | .065 | .048 | .061 | .046 | .034 | .035 | .027 | .020 | .011 | .009 | .007 |   |
| 6.0  | .095    | .067 | .047 | .082 | .058 | .041 | .057 | .041 | .029 | .033 | .024 | .017 | .011 | .008 | .006 |   |
| 7.0  | .089    | .060 | .040 | .077 | .052 | .035 | .053 | .037 | .025 | .031 | .022 | .015 | .010 | .007 | .005 |   |
| 8.0  | .084    | .054 | .034 | .072 | .047 | .030 | .050 | .033 | .021 | .029 | .020 | .013 | .009 | .006 | .004 |   |
| 9.0  | .079    | .050 | .030 | .068 | .043 | .026 | .047 | .030 | .018 | .027 | .018 | .011 | .009 | .006 | .004 |   |
| 10.0 | .075    | .046 | .026 | .065 | .040 | .023 | .045 | .028 | .016 | .026 | .016 | .010 | .008 | .005 | .003 |   |

C角度范围: 0度 - 360度  
C角度间隔: 30.0度  
测试速度: 快速  
环境温度: 25.3℃  
测试人员: zoe  
测试日期: 2025-01-02

γ角度范围: 0度 - 180度  
γ角度间隔: 1.0度  
测试系统: 远方(EVERFINE)GO-SPEX500\_V1系统 V2.00.461  
环境湿度: 65.0%  
测试距离: 3.160米 [K=1.0000]  
备注: LAMP:BXRE-30G10TH-A-83 Ra:90  
LENS:PM-0132B 36R  
NOT DRIVER:48V  
30minutes warm-up

UGR(Unified Glare Rating)数据表

|  |     |                      |      |      |                  |      |                    |                  |      |      |      |      |
|--|-----|----------------------|------|------|------------------|------|--------------------|------------------|------|------|------|------|
| 实测参数: U:47.997V I:0.3090A P:14.831W PF:1.0000 Freq:49.99Hz<br>实检光通: 1994.65x1 lm |     |                      |      |      |                  |      |                    |                  |      |      |      |      |
| 灯具名称: OZ48-SA-HE-64  |     |                      |      |      | 灯具类型:            |      |                    | 灯具重量:            |      |      |      |      |
| 灯具规格: 3000K  |     |                      |      |      | 外型尺寸:            |      |                    | 测试编号: 2501020007 |      |      |      |      |
| 制造厂商: RISE   |     |                      |      |      | 发光口面: 0.002826m2 |      |                    | 遮光角:             |      |      |      |      |
| 反射比:   | 天花板 | 0.7                  | 0.7  | 0.5  | 0.5              | 0.3  | 0.7                | 0.7              | 0.5  | 0.5  | 0.3  |      |
|  | 墙面  | 0.5                  | 0.3  | 0.5  | 0.3              | 0.3  | 0.5                | 0.3              | 0.5  | 0.3  | 0.3  |      |
|  | 工作面 | 0.2                  | 0.2  | 0.2  | 0.2              | 0.2  | 0.2                | 0.2              | 0.2  | 0.2  | 0.2  |      |
| 房间尺寸   |     | 横向(Viewed crosswise) |      |      |                  |      | 纵向(Viewed endwise) |                  |      |      |      |      |
| x = 2H y = 2H  | 2H  | 12.7                 | 13.5 | 13.0 | 13.7             | 13.8 | 12.8               | 13.6             | 13.1 | 13.8 | 13.9 |      |
|  | 3H  | 12.8                 | 13.5 | 13.0 | 13.7             | 13.9 | 12.9               | 13.6             | 13.1 | 13.8 | 14.0 |      |
|  | 4H  | 12.7                 | 13.4 | 12.9 | 13.6             | 13.8 | 12.8               | 13.5             | 13.1 | 13.7 | 13.9 |      |
|  | 6H  | 12.6                 | 13.2 | 12.9 | 13.5             | 13.7 | 12.7               | 13.3             | 13.0 | 13.6 | 13.8 |      |
|  | 8H  | 12.6                 | 13.2 | 12.9 | 13.4             | 13.7 | 12.7               | 13.3             | 13.0 | 13.5 | 13.8 |      |
|  | 12H | 12.5                 | 13.1 | 12.8 | 13.4             | 13.6 | 12.6               | 13.2             | 12.9 | 13.5 | 13.7 |      |
|  | 4H  | 2H                   | 12.8 | 13.5 | 13.1             | 13.7 | 13.9               | 12.9             | 13.6 | 13.2 | 13.8 | 14.0 |
|  |     | 3H                   | 12.8 | 13.4 | 13.1             | 13.7 | 13.9               | 12.9             | 13.5 | 13.2 | 13.8 | 14.0 |
|  |     | 4H                   | 12.7 | 13.3 | 13.1             | 13.6 | 13.9               | 12.8             | 13.4 | 13.2 | 13.7 | 14.0 |
|  |     | 6H                   | 12.6 | 13.1 | 13.0             | 13.4 | 13.8               | 12.7             | 13.2 | 13.1 | 13.5 | 13.9 |
|  |     | 8H                   | 12.6 | 13.0 | 13.0             | 13.4 | 13.7               | 12.7             | 13.1 | 13.1 | 13.5 | 13.8 |
|  |     | 12H                  | 12.5 | 12.9 | 12.9             | 13.3 | 13.7               | 12.6             | 13.0 | 13.0 | 13.4 | 13.8 |
| 8H   | 4H  | 12.6                 | 13.0 | 13.0 | 13.4             | 13.7 | 12.7               | 13.1             | 13.1 | 13.5 | 13.8 |      |
|  | 6H  | 12.5                 | 12.8 | 12.9 | 13.2             | 13.7 | 12.6               | 12.9             | 13.0 | 13.3 | 13.8 |      |
|  | 8H  | 12.4                 | 12.7 | 12.9 | 13.2             | 13.6 | 12.5               | 12.8             | 13.0 | 13.3 | 13.7 |      |
|  | 12H | 12.4                 | 12.6 | 12.8 | 13.1             | 13.6 | 12.5               | 12.7             | 12.9 | 13.2 | 13.7 |      |
| 12H  | 4H  | 12.5                 | 12.9 | 12.9 | 13.3             | 13.7 | 12.6               | 13.0             | 13.0 | 13.4 | 13.8 |      |
|  | 6H  | 12.4                 | 12.7 | 12.9 | 13.2             | 13.6 | 12.5               | 12.8             | 13.0 | 13.3 | 13.7 |      |
|  | 8H  | 12.4                 | 12.6 | 12.8 | 13.1             | 13.6 | 12.5               | 12.7             | 12.9 | 13.2 | 13.7 |      |
| 不同间隔布灯时,观察者位置引起的UGR变化(CIE Pub.117):  |     |                      |      |      |                  |      |                    |                  |      |      |      |      |
| S = 1.0H   |     | + 1.0 / - 1.7        |      |      |                  |      | + 1.0 / - 1.5      |                  |      |      |      |      |
| 1.5H   |     | + 1.1 / - 0.8        |      |      |                  |      | + 1.1 / - 0.9      |                  |      |      |      |      |
| 2.0H   |     | + 1.8 / - 3.5        |      |      |                  |      | + 1.8 / - 3.5      |                  |      |      |      |      |

依据CIE Pub.117计算, 1995lm光源光通表格中的数据需要进行修正( $8\log(F/F_0) = 2.4$ )。  
出光口面积: 0.002826 m2

C角度范围: 0度 - 360度  
C角度间隔: 30.0度  
测试速度: 快速  
环境温度: 25.3℃  
测试人员: zoe  
测试日期: 2025-01-02

Y角度范围: 0度 - 180度  
Y角度间隔: 1.0度  
测试系统: 远方(EVERFINE)GO-SPEX500\_V1系统 V2.00.461  
环境湿度: 65.0%  
测试距离: 3.160米 [K=1.0000]  
备注: LAMP:BXRE-30G10TH-A-83 Ra:90  
LENS:PM-0132B 36R  
NOT DRIVER:48V  
30minutes warm-up



## UF利用系数表

|  |                              |                  |
|--|------------------------------|------------------|
| 实测参数: U:47.997V I:0.3090A P:14.831W PF:1.0000 Freq:49.99Hz<br>实检光通: 1994.65x1 lm |                              |                  |
| 灯具名称: OZ48-SA-HE-64  | 灯具类型:                        | 灯具重量:            |
| 灯具规格: 3000K  | 外型尺寸:                        | 测试编号: 2501020007 |
| 制造厂商: RISE   | 发光口面: 0.002826m <sup>2</sup> | 遮光角:             |

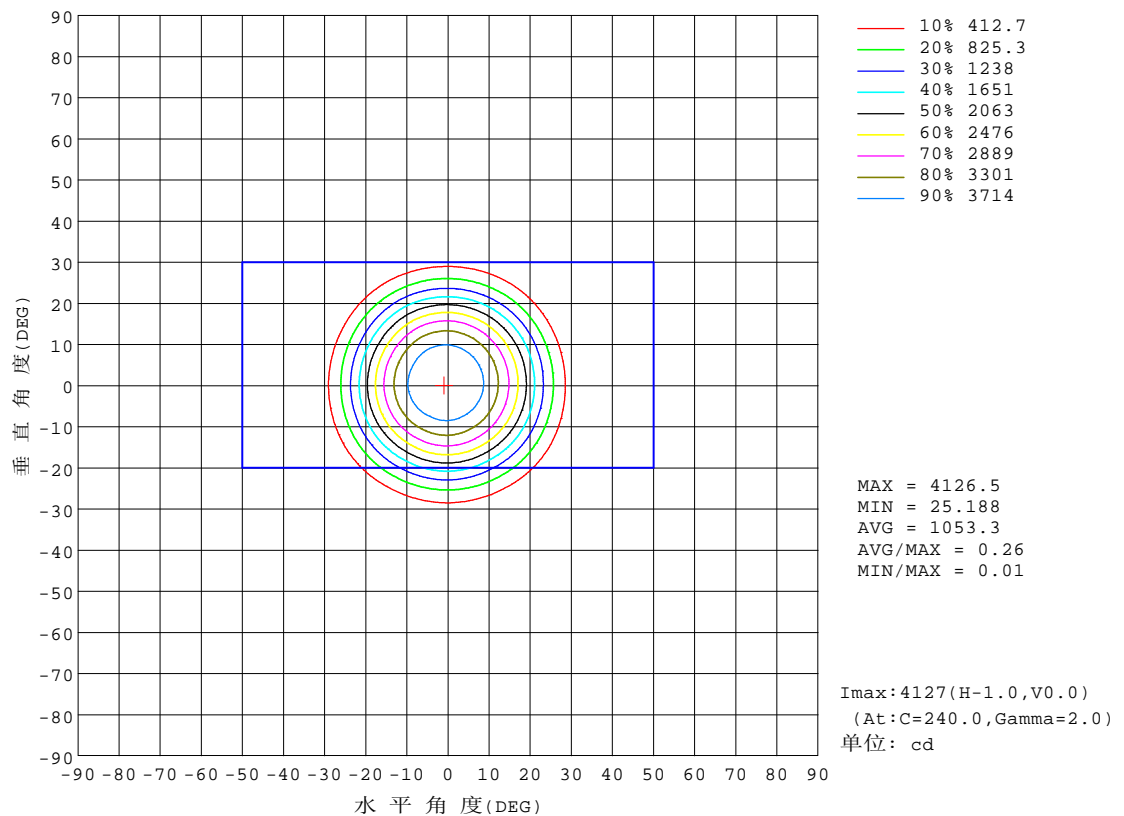
| 反 射 比 / REFLECTANCE        |  |     |     |     |     |     |                     |     |     |        |
|----------------------------|--|-----|-----|-----|-----|-----|---------------------|-----|-----|--------|
| 天花板                        | 0.8  | 0.8 | 0.8 | 0.7 | 0.7 | 0.7 | 0.5                 | 0.5 | 0.5 | 0      |
| 墙壁                         | 0.7  | 0.5 | 0.3 | 0.7 | 0.5 | 0.3 | 0.7                 | 0.5 | 0.3 | 0      |
| 工作面                        | 0.2  | 0.2 | 0.2 | 0.2 | 0.2 | 0.2 | 0.2                 | 0.2 | 0.2 | 0      |
| 室形指数                       | 利用系数 UTILIZATION FACTORS(%) $k(RI) \times RCR = 5$ |     |     |     |     |     |                     |     |     |        |
| $k = 0.60$                 | 78   | 72  | 69  | 77  | 72  | 69  | 77                  | 72  | 69  | 66     |
| 0.80                       | 84   | 79  | 76  | 84  | 79  | 76  | 83                  | 78  | 76  | 73     |
| 1.00                       | 88   | 83  | 80  | 87  | 83  | 80  | 86                  | 83  | 79  | 76     |
| 1.25                       | 91   | 87  | 84  | 90  | 86  | 84  | 89                  | 85  | 83  | 79     |
| 1.50                       | 93   | 89  | 87  | 92  | 89  | 86  | 90                  | 88  | 85  | 82     |
| 2.00                       | 96   | 92  | 89  | 94  | 91  | 89  | 92                  | 89  | 87  | 83     |
| 2.50                       | 97   | 94  | 91  | 96  | 93  | 90  | 93                  | 91  | 89  | 84     |
| 3.00                       | 98   | 95  | 93  | 97  | 94  | 92  | 94                  | 92  | 90  | 85     |
| 4.00                       | 100  | 98  | 96  | 98  | 96  | 95  | 95                  | 93  | 92  | 86     |
| 5.00                       | 101  | 99  | 98  | 99  | 98  | 96  | 96                  | 95  | 94  | 87     |
| ROOM INDEX                 | UF(总)  |     |     |     |     |     |                     |     |     | UF(直接) |
| 依据标准文件 DIN EN 13032-2 2004 |  |     | 悬挂灯 |     |     |     | 安装距高比 SHRNOM = 1.25 |     |     |        |

C角度范围: 0度 - 360度  
 C角度间隔: 30.0度  
 测试速度: 快速  
 环境温度: 25.3℃  
 测试人员: zoe  
 测试日期: 2025-01-02

γ角度范围: 0度 - 180度  
 γ角度间隔: 1.0度  
 测试系统: 远方(EVERFINE)GO-SPEX500\_V1系统 V2.00.461  
 环境湿度: 65.0%  
 测试距离: 3.160米 [K=1.0000]  
 备注: LAMP:BXRE-30G10TH-A-83 Ra:90  
 LENS:PM-0132B 36R  
 NOT DRIVER:48V  
 30minutes warm-up

## 灯具等光强曲线

|  |                              |                  |
|--|------------------------------|------------------|
| 实测参数: U:47.997V I:0.3090A P:14.831W PF:1.0000 Freq:49.99Hz<br>实检光通: 1994.65x1 lm |                              |                  |
| 灯具名称: OZ48-SA-HE-64  | 灯具类型:                        | 灯具重量:            |
| 灯具规格: 3000K  | 外型尺寸:                        | 测试编号: 2501020007 |
| 制造厂商: RISE   | 发光口面: 0.002826m <sup>2</sup> | 遮光角:             |

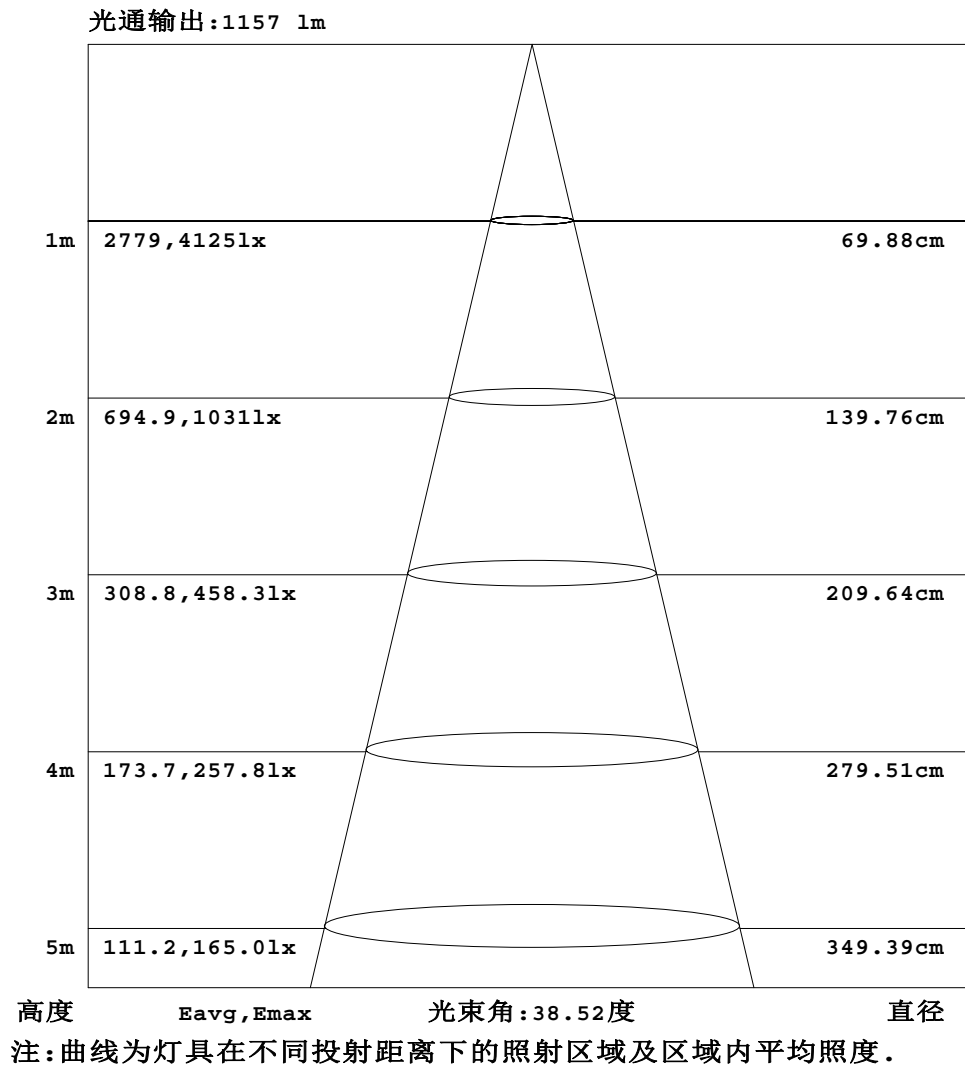


C角度范围: 0度 - 360度  
C角度间隔: 30.0度  
测试速度: 快速  
环境温度: 25.3℃  
测试人员: zoe  
测试日期: 2025-01-02

Y角度范围: 0度 - 180度  
Y角度间隔: 1.0度  
测试系统: 远方(EVERFINE)GO-SPEX500\_V1系统 V2.00.461  
环境湿度: 65.0%  
测试距离: 3.160米 [K=1.0000]  
备注: LAMP:BXRE-30G10TH-A-83 Ra:90  
LENS:PM-0132B 36R  
NOT DRIVER:48V  
30minutes warm-up

## 灯具有效平均照度图

|  |                              |                  |
|--|------------------------------|------------------|
| 实测参数: U:47.997V I:0.3090A P:14.831W PF:1.0000 Freq:49.99Hz<br>实检光通: 1994.65x1 lm |                              |                  |
| 灯具名称: OZ48-SA-HE-64  | 灯具类型:                        | 灯具重量:            |
| 灯具规格: 3000K  | 外型尺寸:                        | 测试编号: 2501020007 |
| 制造厂商: RISE   | 发光口面: 0.002826m <sup>2</sup> | 遮光角:             |

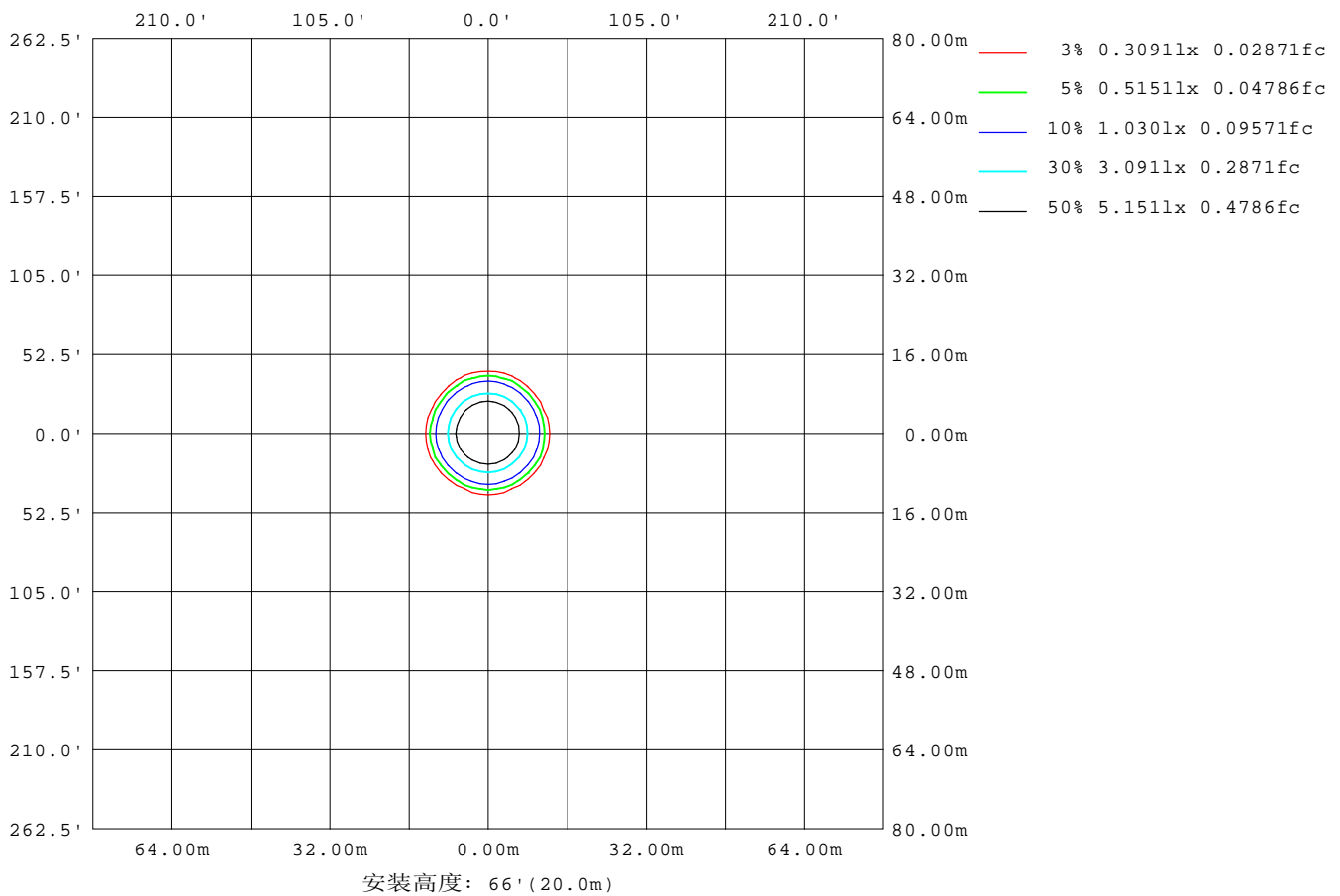


C角度范围: 0度 - 360度  
 C角度间隔: 30.0度  
 测试速度: 快速  
 环境温度: 25.3℃  
 测试人员: zoe  
 测试日期: 2025-01-02

γ角度范围: 0度 - 180度  
 γ角度间隔: 1.0度  
 测试系统: 远方(EVERFINE)GO-SPEX500\_V1系统 V2.00.461  
 环境湿度: 65.0%  
 测试距离: 3.160米 [K=1.0000]  
 备注: LAMP:BXRE-30G10TH-A-83 Ra:90  
 LENS:PM-0132B 36R  
 NOT DRIVER:48V  
 30minutes warm-up

## 平面等照度曲线

|  |                              |                  |
|--|------------------------------|------------------|
| 实测参数: U:47.997V I:0.3090A P:14.831W PF:1.0000 Freq:49.99Hz<br>实检光通: 1994.65x1 lm |                              |                  |
| 灯具名称: OZ48-SA-HE-64  | 灯具类型:                        | 灯具重量:            |
| 灯具规格: 3000K  | 外型尺寸:                        | 测试编号: 2501020007 |
| 制造厂商: RISE   | 发光口面: 0.002826m <sup>2</sup> | 遮光角:             |



C角度范围: 0度 - 360度  
 C角度间隔: 30.0度  
 测试速度: 快速  
 环境温度: 25.3℃  
 测试人员: zoe  
 测试日期: 2025-01-02

Y角度范围: 0度 - 180度  
 Y角度间隔: 1.0度  
 测试系统: 远方(EVERFINE)GO-SPEX500\_V1系统 V2.00.461  
 环境湿度: 65.0%  
 测试距离: 3.160米 [K=1.0000]  
 备注: LAMP:BXRE-30G10TH-A-83 Ra:90  
 LENS:PM-0132B 36R  
 NOT DRIVER:48V  
 30minutes warm-up

## LED筒灯平均亮度报告

|  |                  |                  |
|--|------------------|------------------|
| 实测参数: U:47.997V I:0.3090A P:14.831W PF:1.0000 Freq:49.99Hz<br>实检光通: 1994.65x1 lm |                  |                  |
| 灯具名称: OZ48-SA-HE-64  | 灯具类型:            | 灯具重量:            |
| 灯具规格: 3000K  | 外型尺寸:            | 测试编号: 2501020007 |
| 制造厂商: RISE   | 发光口面: 0.002826m2 | 遮光角:             |

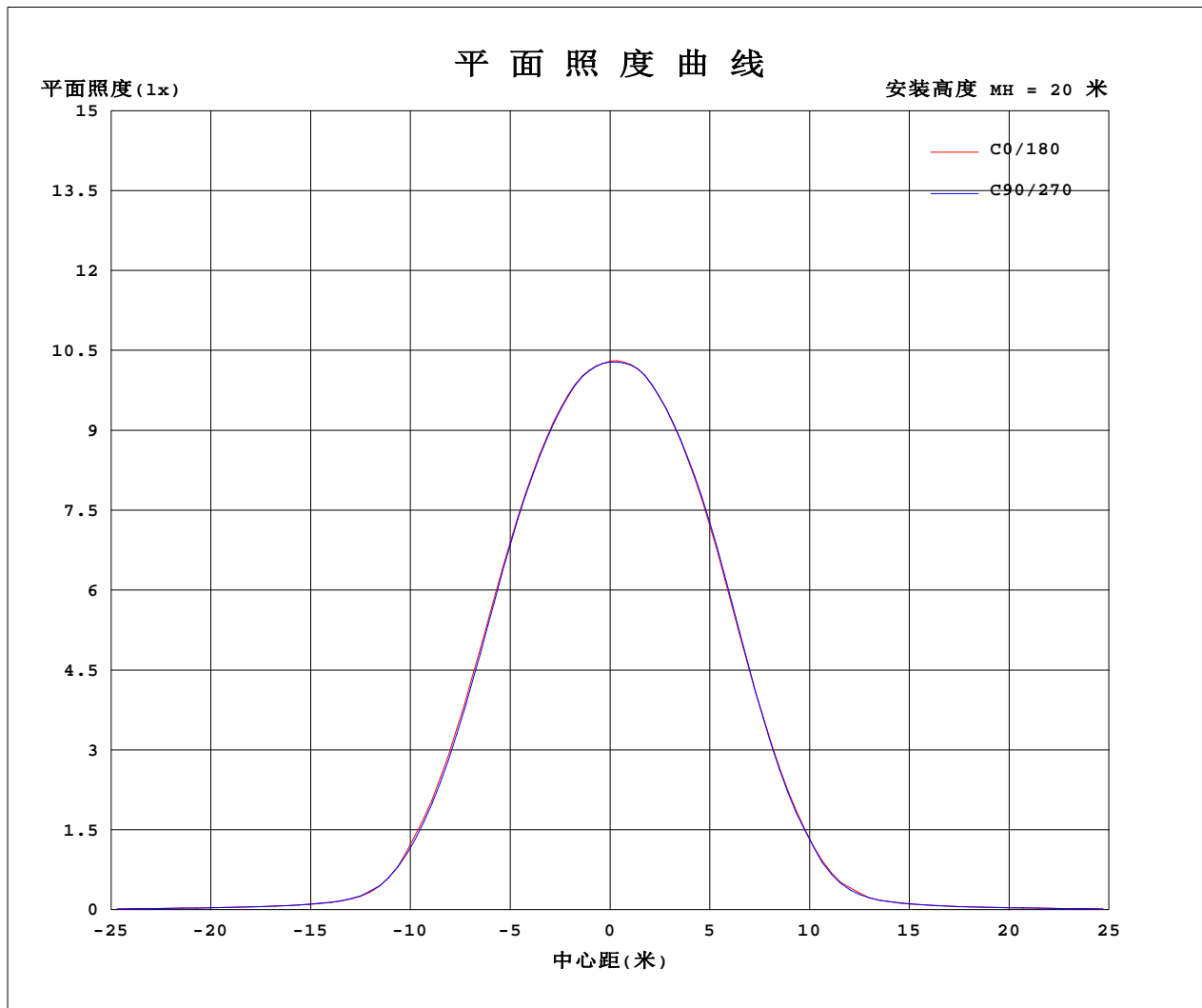
| 平均亮度      | 数值(cd/m2) |
|-----------|-----------|
| L横(65)av  | 6779      |
| L横(75)av  | 367       |
| L横(85)av  | 283       |
| L纵(65)av  | 7134      |
| L纵(75)av  | 377       |
| L纵(85)av  | 265       |
| L45(65)av | 6952      |
| L45(75)av | 343       |
| L45(85)av | 195       |

注:依据标准 GB/T 29293-2012 计算

C角度范围: 0度 - 360度  
 C角度间隔: 30.0度  
 测试速度: 快速  
 环境温度: 25.3℃  
 测试人员: zoe  
 测试日期: 2025-01-02

Y角度范围: 0度 - 180度  
 Y角度间隔: 1.0度  
 测试系统: 远方(EVERFINE)GO-SPEX500\_V1系统 V2.00.461  
 环境湿度: 65.0%  
 测试距离: 3.160米 [K=1.0000]  
 备注: LAMP:BXRE-30G10TH-A-83 Ra:90  
 LENS:PM-0132B 36R  
 NOT DRIVER:48V  
 30minutes warm-up

## 平面照度曲线



C角度范围: 0度 - 360度  
 C角度间隔: 30.0度  
 测试速度: 快速  
 环境温度: 25.3℃  
 测试人员: zoe  
 测试日期: 2025-01-02

Y角度范围: 0度 - 180度  
 Y角度间隔: 1.0度  
 测试系统: 远方(EVERFINE)GO-SPEX500\_V1系统 V2.00.461  
 环境湿度: 65.0%  
 测试距离: 3.160米 [K=1.0000]  
 备注: LAMP:BXRE-30G10TH-A-83 Ra:90  
 LENS:PM-0132B 36R  
 NOT DRIVER:48V  
 30minutes warm-up



光 强 分 布 数 据 表 格

|  |                  |                  |
|--|------------------|------------------|
| 实测参数: U:47.997V I:0.3090A P:14.831W PF:1.0000 Freq:49.99Hz<br>实检光通: 1994.65x1 lm |                  |                  |
| 灯具名称: OZ48-SA-HE-64  | 灯具类型:            | 灯具重量:            |
| 灯具规格: 3000K  | 外型尺寸:            | 测试编号: 2501020007 |
| 制造厂商: RISE   | 发光口面: 0.002826m2 | 遮光角:             |

|                   |      |      |      |      |      |      |      |      |      |      |      |      |        |  |  |  |  |  |  |
|-------------------|------|------|------|------|------|------|------|------|------|------|------|------|--------|--|--|--|--|--|--|
| 表--1              |      |      |      |      |      |      |      |      |      |      |      |      | 单位: cd |  |  |  |  |  |  |
| C(DEG)<br>γ (DEG) | 0    | 30   | 60   | 90   | 120  | 150  | 180  | 210  | 240  | 270  | 300  | 330  |        |  |  |  |  |  |  |
| 0                 | 4116 | 4116 | 4116 | 4116 | 4116 | 4116 | 4116 | 4116 | 4116 | 4116 | 4116 | 4116 |        |  |  |  |  |  |  |
| 5                 | 3988 | 3979 | 3978 | 3989 | 4011 | 4036 | 4055 | 4071 | 4081 | 4064 | 4034 | 4005 |        |  |  |  |  |  |  |
| 10                | 3575 | 3545 | 3533 | 3565 | 3585 | 3642 | 3687 | 3694 | 3721 | 3703 | 3656 | 3610 |        |  |  |  |  |  |  |
| 15                | 2857 | 2816 | 2796 | 2836 | 2858 | 2935 | 2992 | 3002 | 3042 | 3027 | 2970 | 2906 |        |  |  |  |  |  |  |
| 20                | 1869 | 1834 | 1785 | 1827 | 1837 | 1924 | 1982 | 1978 | 2020 | 1988 | 1954 | 1910 |        |  |  |  |  |  |  |
| 25                | 922  | 901  | 866  | 887  | 897  | 962  | 1003 | 993  | 1010 | 980  | 964  | 941  |        |  |  |  |  |  |  |
| 30                | 276  | 278  | 264  | 281  | 264  | 302  | 321  | 301  | 314  | 312  | 296  | 273  |        |  |  |  |  |  |  |
| 35                | 104  | 107  | 105  | 108  | 104  | 108  | 114  | 110  | 115  | 114  | 107  | 102  |        |  |  |  |  |  |  |
| 40                | 64.0 | 66.6 | 66.5 | 66.3 | 65.6 | 67.0 | 67.4 | 67.3 | 71.1 | 68.2 | 65.5 | 63.2 |        |  |  |  |  |  |  |
| 45                | 48.0 | 49.7 | 49.8 | 49.5 | 48.5 | 49.6 | 49.5 | 49.8 | 51.6 | 51.2 | 48.2 | 47.7 |        |  |  |  |  |  |  |
| 50                | 36.5 | 37.7 | 38.1 | 38.0 | 37.3 | 37.4 | 37.3 | 37.6 | 38.5 | 38.2 | 37.0 | 36.3 |        |  |  |  |  |  |  |
| 55                | 27.6 | 28.7 | 29.0 | 29.0 | 28.3 | 28.1 | 27.7 | 27.6 | 28.4 | 28.2 | 27.7 | 27.3 |        |  |  |  |  |  |  |
| 60                | 16.2 | 17.4 | 17.0 | 17.7 | 16.4 | 15.9 | 15.5 | 15.3 | 16.0 | 16.0 | 16.0 | 15.7 |        |  |  |  |  |  |  |
| 65                | 8.31 | 8.52 | 8.68 | 8.77 | 8.70 | 8.22 | 7.89 | 7.78 | 8.14 | 8.27 | 8.26 | 8.13 |        |  |  |  |  |  |  |
| 70                | 3.07 | 3.35 | 3.44 | 3.54 | 3.53 | 3.24 | 2.88 | 2.94 | 3.09 | 3.08 | 3.17 | 3.11 |        |  |  |  |  |  |  |
| 75                | 0.29 | 0.31 | 0.29 | 0.31 | 0.27 | 0.26 | 0.25 | 0.23 | 0.21 | 0.24 | 0.23 | 0.24 |        |  |  |  |  |  |  |
| 80                | 0.09 | 0.07 | 0.08 | 0.09 | 0.08 | 0.08 | 0.08 | 0.07 | 0.06 | 0.08 | 0.06 | 0.06 |        |  |  |  |  |  |  |
| 85                | 0.07 | 0.05 | 0.06 | 0.07 | 0.05 | 0.05 | 0.06 | 0.05 | 0.05 | 0.06 | 0.05 | 0.05 |        |  |  |  |  |  |  |
| 90                | 0.00 | 0.00 | 0.00 | 0.00 | 0.00 | 0.00 | 0.00 | 0.00 | 0.00 | 0.00 | 0.00 | 0.00 |        |  |  |  |  |  |  |
| 95                | 0.00 | 0.00 | 0.00 | 0.00 | 0.00 | 0.00 | 0.00 | 0.00 | 0.00 | 0.00 | 0.00 | 0.00 |        |  |  |  |  |  |  |
| 100               | 0.00 | 0.00 | 0.00 | 0.00 | 0.00 | 0.00 | 0.00 | 0.00 | 0.00 | 0.00 | 0.00 | 0.00 |        |  |  |  |  |  |  |
| 105               | 0.00 | 0.00 | 0.00 | 0.00 | 0.00 | 0.00 | 0.00 | 0.00 | 0.00 | 0.00 | 0.00 | 0.00 |        |  |  |  |  |  |  |
| 110               | 0.00 | 0.00 | 0.00 | 0.00 | 0.00 | 0.00 | 0.00 | 0.00 | 0.00 | 0.00 | 0.00 | 0.00 |        |  |  |  |  |  |  |
| 115               | 0.00 | 0.00 | 0.00 | 0.00 | 0.00 | 0.00 | 0.00 | 0.00 | 0.00 | 0.00 | 0.00 | 0.00 |        |  |  |  |  |  |  |
| 120               | 0.00 | 0.00 | 0.00 | 0.00 | 0.00 | 0.00 | 0.00 | 0.00 | 0.00 | 0.00 | 0.00 | 0.00 |        |  |  |  |  |  |  |
| 125               | 0.00 | 0.00 | 0.00 | 0.00 | 0.00 | 0.00 | 0.00 | 0.00 | 0.00 | 0.00 | 0.00 | 0.00 |        |  |  |  |  |  |  |
| 130               | 0.00 | 0.00 | 0.00 | 0.00 | 0.00 | 0.00 | 0.00 | 0.00 | 0.00 | 0.00 | 0.00 | 0.00 |        |  |  |  |  |  |  |
| 135               | 0.00 | 0.00 | 0.00 | 0.00 | 0.00 | 0.00 | 0.00 | 0.00 | 0.00 | 0.00 | 0.00 | 0.00 |        |  |  |  |  |  |  |
| 140               | 0.00 | 0.00 | 0.00 | 0.00 | 0.00 | 0.00 | 0.00 | 0.00 | 0.00 | 0.00 | 0.00 | 0.00 |        |  |  |  |  |  |  |
| 145               | 0.00 | 0.00 | 0.00 | 0.00 | 0.00 | 0.00 | 0.00 | 0.00 | 0.00 | 0.00 | 0.00 | 0.00 |        |  |  |  |  |  |  |
| 150               | 0.00 | 0.00 | 0.00 | 0.00 | 0.00 | 0.00 | 0.00 | 0.00 | 0.00 | 0.00 | 0.00 | 0.00 |        |  |  |  |  |  |  |
| 155               | 0.00 | 0.00 | 0.00 | 0.00 | 0.00 | 0.00 | 0.00 | 0.00 | 0.00 | 0.00 | 0.00 | 0.00 |        |  |  |  |  |  |  |
| 160               | 0.00 | 0.00 | 0.00 | 0.00 | 0.00 | 0.00 | 0.00 | 0.00 | 0.00 | 0.00 | 0.00 | 0.00 |        |  |  |  |  |  |  |
| 165               | 0.00 | 0.00 | 0.00 | 0.00 | 0.00 | 0.00 | 0.00 | 0.00 | 0.00 | 0.00 | 0.00 | 0.00 |        |  |  |  |  |  |  |
| 170               | 0.00 | 0.00 | 0.00 | 0.00 | 0.00 | 0.00 | 0.00 | 0.00 | 0.00 | 0.00 | 0.00 | 0.00 |        |  |  |  |  |  |  |
| 175               | 0.00 | 0.00 | 0.00 | 0.00 | 0.00 | 0.00 | 0.00 | 0.00 | 0.00 | 0.00 | 0.00 | 0.00 |        |  |  |  |  |  |  |
| 180               | 0.00 | 0.00 | 0.00 | 0.00 | 0.00 | 0.00 | 0.00 | 0.00 | 0.00 | 0.00 | 0.00 | 0.00 |        |  |  |  |  |  |  |

C角度范围: 0度 - 360度  
C角度间隔: 30.0度  
测试速度: 快速  
环境温度: 25.3℃  
测试人员: zoe  
测试日期: 2025-01-02

γ角度范围: 0度 - 180度  
γ角度间隔: 1.0度  
测试系统: 远方(EVERFINE)GO-SPEX500\_V1 系统 V2.00.461  
环境湿度: 65.0%  
测试距离: 3.160米 [K=1.0000]  
备注: LAMP:BXRE-30G10TH-A-83 Ra:90  
LENS:PM-0132B 36R  
NOT DRIVER:48V  
30minutes warm-up